



MONTHLY MEMBERSHIP PROGRESS REPORT

District 27 A1

Results as of: 11/30/2017

GMT: MICHAEL MOLEND A

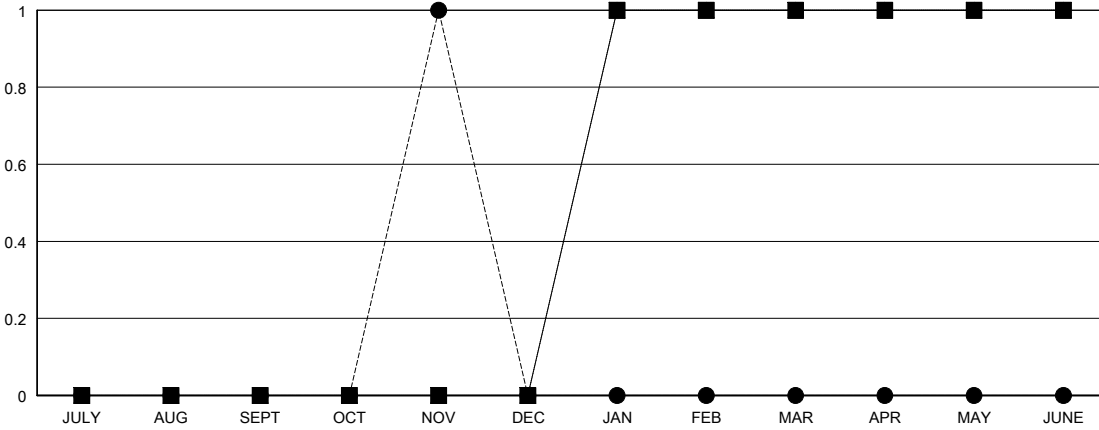
LOCATION WISCONSIN

GMT CA

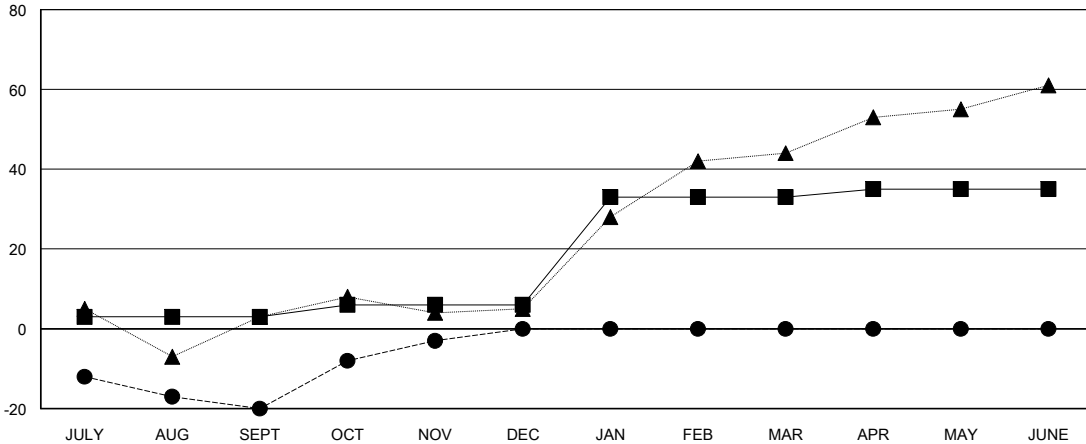
Clubs			
RESULTS FOR 2017-2018			
QUARTER	NEW CLUB GOAL	NEW CLUBS	DROPPED CLUBS
JULY/AUG/SEPT	0	0	1
OCT/NOV/DEC	0	1	0
JAN/FEB/MAR	1	0	0
APR/MAY/JUNE	0	0	0

Members			
RESULTS FOR 2017-2018			
QUARTER	MEMBER GROWTH NET GOAL	MEMBER GROWTH ACTUAL	DROPPED MEMBERS ACTUAL (including transfers)
JULY/AUG/SEPT	3	38	54
OCT/NOV/DEC	3	66	44
JAN/FEB/MAR	27	0	0
APR/MAY/JUNE	2	0	0

GOALS AND ACTUAL NEW CLUBS CUMULATIVE



GOALS AND ACTUAL MEMBERS CUMULATIVE



DROPPED CLUBS: 1

24 CLUBS OF 52 ADDED 1 OR MORE NEW MEMBERS

GENDER DISTRIBUTION	
MALE	1,462 (79.76%)
FEMALE	371 (20.24%)
Women Percentage Fiscal Year Goal: 23%	

DROPPED MEMBERS	
DECEASED	8
CLUB CANCELLED	0
OTHER	90
TOTAL	98

[CLICK HERE FOR CUMULATIVE MEMBERSHIP DATA](#)

TOTAL FAMILY UNIT MEMBERS	294
FAMILY MEMBERS PAYING HALF DUES	155